

# Marion County Co-Responder Program



By Jennifer Martinez

# Overview

0 1 Introduction

0 3 Tim e line

0 5 Best Practices

0 2 Our Team

0 4 Mutual Benefits

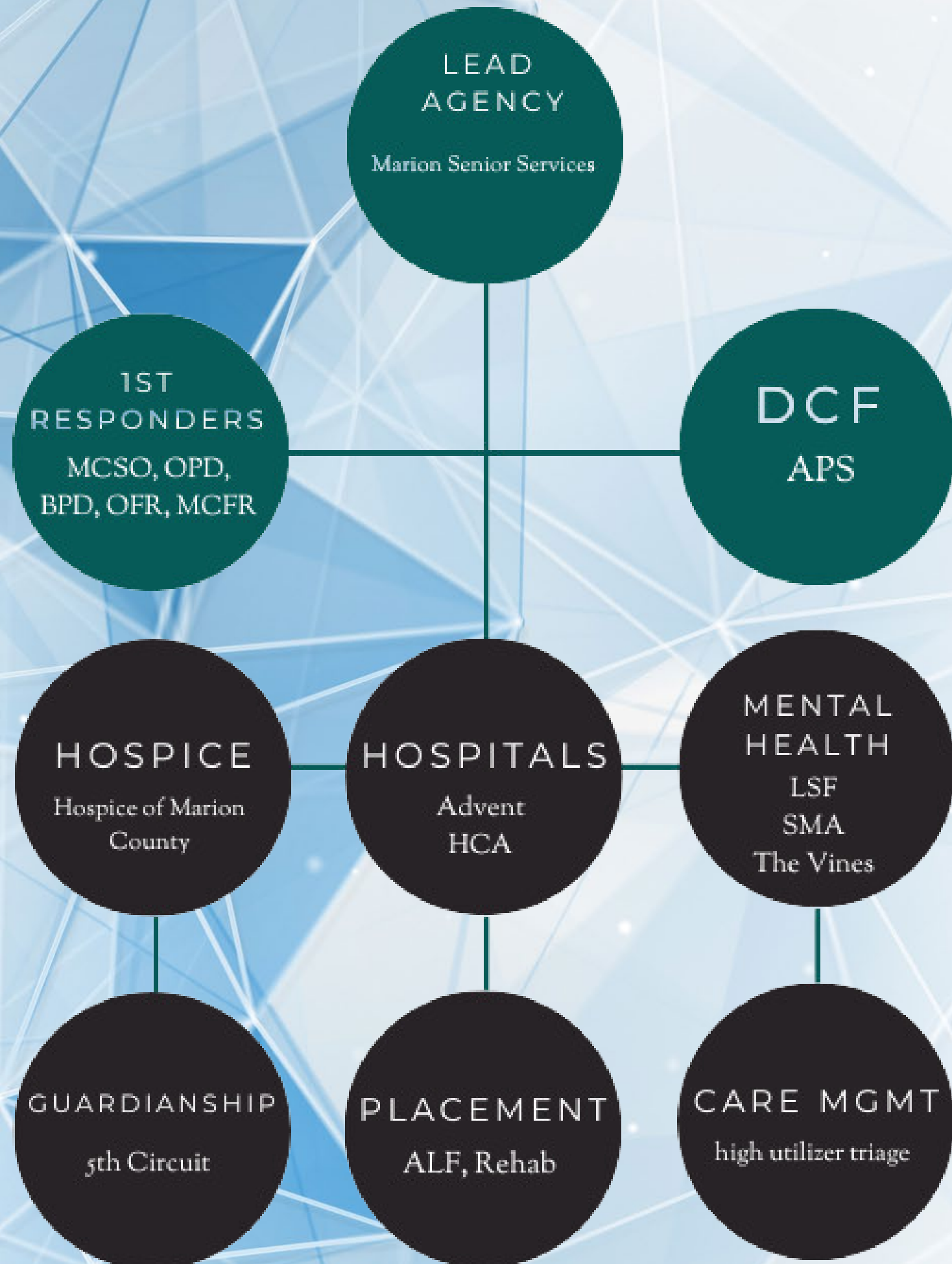
0 6 Questions

# Introduction



Marion County's Co-Responder program pairs a Community Paramedic with a behavioral health specialist to identify, intervene, respond to, and divert behavioral health-related calls while meeting the health, safety, and service needs of geriatric residents and their families.

# Organizational Structure



The coordinated response allows for barriers to be removed and higher quality service to be provided while also reducing duplication of services.



# PROJECT TIMELINE

## Timeline

# 2023

- \*Fully Funded Appropriation
- \*Bi-Weekly High Utilizer call
- \*18 partners & growing
- \*Hiring another Clinician, Admin. support, and dedicated elder affairs Crisis Intervention Specialist with MCSO

**PHASE 1**  
1/2021

Hired Dr. Briana Kelley as the Human Services Counselor

**PHASE 2**  
5/2021

The OAA application revision was submitted to revise and add Gerontological Counseling

**PHASE 3**  
7/2021

Gerontological Counseling added to OAA Title III Contract. Began referrals from MCSO and OPD

**PHASE 4**  
2/2022

Partnership with Lutheran Services Florida for Law Enforcement Co-Responder team

**PHASE 5**  
4/2022

Vicki Harper was hired April 2022 as a Case Manager for the LSF program

**PHASE 6**  
11/2022

Began working with Ocala Fire Rescue and targeting the County's high utilizers and formed multi-disciplinary team





### Prevention

Prevent unnecessary incarceration and/or hospitalization of elders



### Coordinated Response

Act as a liaison between first responders & individuals in crisis to provide the best possible care



### Access to Care

Reduces barriers to care and social deterrents; Improves physical and mental health



### Saves Money

Diverts elders from costly acute care settings, provide assessment & community support services needed to allow elders to live independently and age in place



### Unified Approach

Provide alternative care in the least restrictive environment through coordination of medical, mental health and substance abuse resources



### Collaboration

Over 18 partners working collaboratively to facilitate the return of First Responders to their normal duties

# Mutual Benefits



## Best Practices

**01** Identify Stakeholders, any duplications of services and assign lead, and develop coordinating body.

**02** Open communication, documentation, and feedback.

**03** Identify public guardians, private guardians, and fiduciaries.

**04** Observations are key.

**05** Remember this team is NOT in place of 911 calls or well-being checks.

**06** Higher quality of life, reduction in 911 and duplication of services, and allowing individuals to age in place, safely and with dignity.



# Thank you



Jennifer Martinez  
Executive Director  
JMartinez@marionseniorservices.org  
352.875.4113 cell

