



SUMMIT SPONSORSHIP OPPORTUNITIES

APRIL 19-20, 2022

GUIDEWELL INNOVATION CENTER

6555 Sanger Road, Orlando, FL 32827



ABOUT THE EVENT

This two-day event designed specifically for leading policy and decision makers will showcase ways that industry experts are transforming Florida's behavioral healthcare system. Executives, funders, community leaders and stakeholders will highlight innovative programs and examine breakthrough ideas. The program will include a funder's panel with state and local leadership, healthcare funders, and foundation executives.

KEYNOTE SPEAKERS



Bob Carter, CFRE

Chairman of [Carter – Advancing Philanthropy Worldwide](#)
Founding Member of [World Health Organization \(WHO\) Foundation](#)

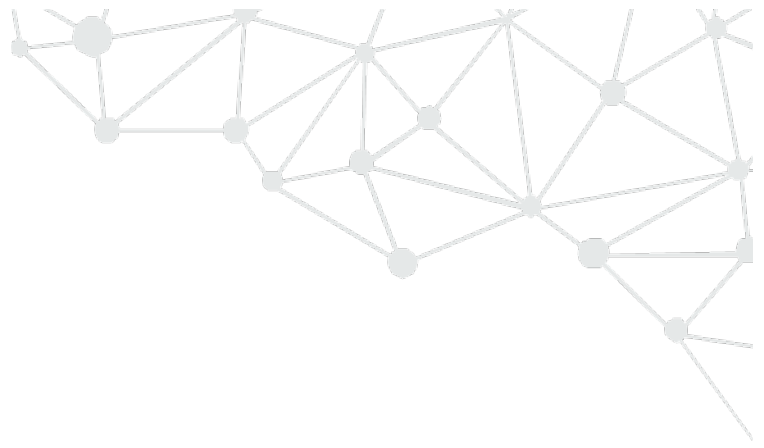
Bob Carter is a recognized global expert in institutional strategy and fundraising. He is chair of Carter; an international consultancy dedicated to advancing philanthropy worldwide. He previously was Senior Advisor for Changing Our World and Omnicom Non-profit Group and spent 26 years with Ketchum, 15 as President and CEO. Mr. Carter is past chair of the Association of Fundraising Professionals International, the National Aquarium, and Boys' Latin School. He has been a trustee for numerous others, including The Indiana University Lilly Family School of Philanthropy. He is a graduate of the Johns Hopkins University and a Certified Fundraising Executive.



Nick Kittle

Innovation Coach and Author of [Sustainovation](#)

Nick is a gifted speaker, thought leader, coach and facilitator. He is the author of the best-selling government innovation book *Sustainovation: Building Sustainable Innovation in Government, One Wildly Creative Idea at a Time*, and spent the last 15 years in government, most recently as a Chief Innovation Officer. He has won three national innovation awards and founded one of the first five government innovation offices in the country. During his government career, Nick directed 17 different divisions and developed over 65 unique or first-of-their-kind pilot projects while directly generating \$7.8 M in savings and pioneering the concept of Innovation Value.



CORPORATE SPONSORSHIP OPPORTUNITIES

PRESENTING SPONSOR | \$15,000

VISIONARY | \$10,000

RECEPTION SPONSOR | \$7,500

TRAILBLAZER | \$5,000

LUNCH SPONSOR | \$3,750

PATHFINDER | \$2,500

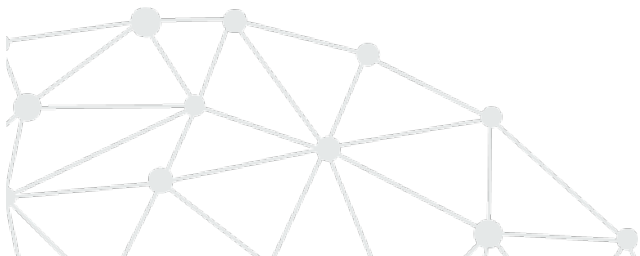
INNOVATOR | \$1,000

REFRESHMENT SPONSOR | \$750

PIONEER | \$500

DEADLINES

- Signed sponsorship agreement due by February 1, 2022.
- Payment, digital logo and event program advertisement (if applicable) due February 1, 2022.
- Promotional items for event gift bags due March 15, 2022.





CORPORATE SPONSORSHIP LEVELS

Your partnership will provide the tools and resources to make this a truly impactful summit with funds raised above and beyond our costs helping to promote and sustain innovative programs and practices within our safety net system of behavioral healthcare for children and families living in poverty.

The event will be promoted via LSF's social media platform (3,500+ followers); website (10,000+ hits monthly); national and local press releases; email distribution to our provider network that includes more than 60 not-for-profit organizations in 23 counties who employ 4,400+ people and serve more than 1.2 million individuals per year; LSF Health Systems electronic newsletter to subscribers (1400+); and event program (150-200 event attendees).

PRESENTING SPONSOR | \$15,000 | LIMIT 1

- Opportunity to address audience during opening remarks and introduce opening keynote speaker
- Opportunity to play short promotional video during summit*
- Opportunity to moderate a panel at the event
- Thought leadership through one (1) education/presentation session (content subject to LSF approval)
- Opportunity to feature digital logo on theater wall*
- Vendor table at event showcasing display materials*
- Featured logo on participant bags with option to include promotional material* (bag will be sent to first 50 individuals who sign up to attend, if virtual)
- Recognition as presenting sponsor on all promotional materials, including event signage, front cover of program, pre- and post-event emails, social media posts and news releases
- Spotlight in one pre-summit email and social media post
- Two-page color spread in event program or full color ad with accompanying letter/article
- Prominent logo placement and link on event page of LSF Health Systems website**
- 15 admissions to summit and two reserved tables at evening reception
- Recognition as corporate sponsor in the LSF Health Systems annual report
- First right of refusal for sponsorship renewal for 2023 summit

VISIONARY | \$10,000 | LIMIT 1

- Opportunity to introduce session of choice or speaker (excludes opening remarks and opening keynote speaker)
- Thought leadership through one (1) education/presentation session (content subject to LSF approval)
- Opportunity to feature digital logo on theater wall*
- Vendor table at event showcasing materials*
- Prominent logo on participant bags with option to include promotional material*
- Prominent logo placement on event signage, in program, and in one pre-event email
- Inclusion in two sponsorship-related social media posts
- Full-page color ad in event program in premium position
- Prominent logo placement and link on event page of LSF Health Systems website**
- 10 admissions to summit and one reserved table at evening reception
- Recognition as corporate sponsor in the LSF Health Systems annual report

RECEPTION SPONSOR | \$7,500 | LIMIT 1

APRIL 19TH

- Opportunity to address guests at the reception
- Thought leadership through one (1) education/presentation session (content subject to LSF approval)
- Featured logo on signage at reception
- Vendor table showcasing materials at reception venue*
- Logo on participant bags with option to include promotional material*
- Recognition in program schedule for reception sponsorship
- Logo placement on event signage and in program and in one pre-event email
- Inclusion in one sponsorship-related social media post
- Full-page color ad in the event program
- Prominent logo placement and link on event page of LSF Health Systems website**
- 7 admissions to summit and one reserved table at reception
- Corporate sponsorship recognized in the LSF Health Systems annual report

TRAILBLAZER | \$5,000 | LIMIT 4

- Option to include promotional material in participant bags*
- Logo placement on event signage and in program
- Inclusion in one sponsorship-related social media post
- Full-page color ad in the event program
- Logo placement and link on event page of LSF Health Systems website**
- 5 admissions to summit
- Recognition as corporate sponsor in the LSF Health Systems annual report

LUNCH SPONSOR | \$3,750 | LIMIT 2

APRIL 19TH or 20th

- Featured logo on signage at luncheon
- Option to include promotional materials in participant bags*
- Recognition in program schedule for lunch sponsorship
- Logo placement on event signage and in program
- Half-page color ad in the event program
- Logo placement and link on event page of LSF Health Systems website**
- 3 admissions to summit
- Corporate sponsorship recognized in the LSF Health Systems annual report

Note: May sponsor lunch for both days at \$6,500. If so, upgraded to logo and full-page advertisement in program, 6 admissions to summit and prominent logo on website.



PATHFINDER | \$2,500 | LIMIT 4

- Option to include promotional material in participant bags*
- Logo placement on event signage and program
- Half-page color ad in the event program
- Listing and link on event page of LSF Health Systems website**
- 2 admissions to summit
- Recognition as corporate sponsor in the LSF Health Systems annual report

INNOVATOR | \$1,000

- Logo placement on event signage and listing in program
- Quarter-page color ad in the event program
- Listing on event page of LSF Health Systems website**
- 2 admissions to summit
- Recognition as corporate sponsor in the LSF Health Systems annual report

REFRESHMENT SPONSOR | \$750

2 OPPORTUNITIES | APRIL 19TH AND APRIL 20TH

- Logo on event signage and listing in program
- Logo on signage at refreshment stations
- Listing on event page of LSF Health Systems website**
- 2 admissions to summit
- Recognition as corporate sponsor in the LSF Health Systems annual report

Note: May sponsor refreshments for both days at \$1,250. If so, upgraded to logo and quarter page advertisement in program.

PIONEER | \$500

- Logo on event signage and listing in event program
- 1 admission to summit
- Listing on event page of LSF Health Systems website**
- Recognition as corporate sponsor in the LSF Health Systems annual report

** Items to be supplied by sponsor and must fit LSF specifications and deadlines.*

***Website recognition to be live February 1 through May 31, 2022.*

Note: If the event must transition to a virtual platform due to pandemic restrictions or acts of god, we will offer sponsors alternate, comparative benefits. For instance, logos projected on walls would become logos within presentation slide decks; tickets to evening reception would become entries to virtual cocktail hour; and event bags would be mailed to limited number of attendees.



ABOUT LSF HEALTH SYSTEMS

LSF Health Systems is the *second-largest* of seven behavioral health Managing Entities contracted by the Florida Department of Children and Families to oversee the state-funded system of behavioral health care for individuals with mental health or substance use disorders. We contract with more than *60 leading behavioral health organizations in a 23-county region* in Northeast and North Central Florida to provide a comprehensive system of mental health and substance use prevention, treatment and recovery support services. Each year, our provider network serves more than *1.2 million* uninsured or underinsured *children and adults* who live in poverty. As a regional behavioral health leader, LSF Health Systems convenes and collaborates with local businesses, state and county officials, school districts, health departments, law enforcement and criminal justice agencies, foundation leaders, family members and other healthcare and social service stakeholders to:

- solve problems and facilitate solutions to complex behavioral health issues
- expand access to services and programs to improve the health and well-being of children and families
- provide behavioral health training and continuing education to professionals and the public at large
- increase the capacity and promote the sustainability of the behavioral health care infrastructure in our region

We are an arm of Lutheran Services Florida (LSF), a not-for-profit 501(c)(3) human services agency with more than 35 years of experience helping people in need, regardless of religious affiliation, age, or national origin. LSF currently touches the lives of *1 in 50 Floridians every year* through more than 60 programs that employ *1,200 staff* working in *35 counties* throughout the state.



www.lsfhealthsystems.org

**THANK YOU TO OUR INAUGURAL
2019 SUMMIT SPONSORS**



COMMITMENT FORM

Today's Date: _____

Contact Person: _____

Company: _____

Publication Name: _____

Signature of Authorized Representative: _____

Print Name (if different from above): _____

Company Address: _____

City: _____ State: _____ Zip: _____

Phone: _____ Email: _____

Secondary Contact Person: _____ Email: _____

PLEASE RESERVE THE FOLLOWING SPONSORSHIP

For a list of sponsorship benefits, please see attached description of sponsorships. Invoice available by request.

- | | | |
|---|---|---|
| <input type="radio"/> \$15,000 Presenting | <input type="radio"/> \$7,500 Reception Sponsor | <input type="radio"/> \$750 Refreshment Sponsor |
| <input type="radio"/> \$10,000 Visionary | <input type="radio"/> \$3,750 Lunch Sponsor | <input type="radio"/> Other: _____ |
| <input type="radio"/> \$5,000 Trailblazer | <input type="radio"/> \$1,000 Innovator | <input type="radio"/> Donation: _____ |
| <input type="radio"/> \$2,500 Pathfinder | <input type="radio"/> \$500 Pioneer | |

Total Enclosed: \$ _____

PAYMENT OPTIONS

Payment must be received by February 1, 2022 to be included in promotional efforts.

Please invoice (top portion of form must be complete)

Check Payable to: LSF Health Systems

Mailing Address: 9428 Baymeadows Road Suite 320 Jacksonville, FL 32256

Click [here](#) to pay by credit card

LSF Health Systems is an arm of Lutheran Services Florida (LSF), a 501 c (3) organization registered in the state of Florida. A COPY OF THE OFFICIAL REGISTRATION (#CH-13359) AND FINANCIAL INFORMATION MAY BE OBTAINED FROM THE DIVISION OF CONSUMER SERVICES BY CALLING TOLL-FREE 1-800-HELPFLA (1-800-435-7352) WITHIN THE STATE OR VISITING <https://www.fdacs.gov/Divisions-Offices/Consumer-Services>. REGISTRATION DOES NOT IMPLY ENDORSEMENT, APPROVAL OR RECOMMENDATION BY THE STATE.

RETURN TO

karen.verhelst@lsfnet.org | 904-330-8934 | 9428 Baymeadows Road, Jacksonville, FL 32256

www.lsfhealthsystems.org