



HEALTH
SYSTEMS

Town Hall: Triennial Needs Assessment Circuit 4

Agenda

- Welcome and Introductions
- Triennial Needs Assessment: Why? What does LSFHS do with the data?
- FY 20-21 / 21-22 Budget Reduction Exercise
- Community Input / Survey Results / Focus Group
- Top Five Needs, Emerging Issues and Strategic Initiatives
- Circuit 4 Statistics
- Q & A

Why?

- The long-term goal of a Community Health Needs Assessment is to identify health priorities and develop impact strategies with all health-related stakeholders in the community.
- LSFHS will use this assessment as a call to action, engaging providers, consumers, stakeholders and community members, in creating effective programs and policies and collaborating with other organizations to bring positive change to our communities.
- This assessment will serve to inform the development of the LSF Health Systems Strategic Plan for 2020-2023 and the annual enhancement plans submitted to the Department of Children and Families to address unmet needs.

Methodology



Generally, the health of a community is measured by the physical, mental, environmental and social well-being of its residents. Due to the complex determinants of health, the Behavioral Health Needs Assessment is driven by both quantitative and qualitative data collecting and analysis from both primary and secondary data sources.

Methodology

- **Social determinants of health** including socioeconomic demographics, poverty rates, population demographics, uninsured population estimates and educational attainment levels
- **Community Health status** including County Health Rankings, CDC's Behavioral Risk Factor Surveillance Survey, and hospital utilization data.

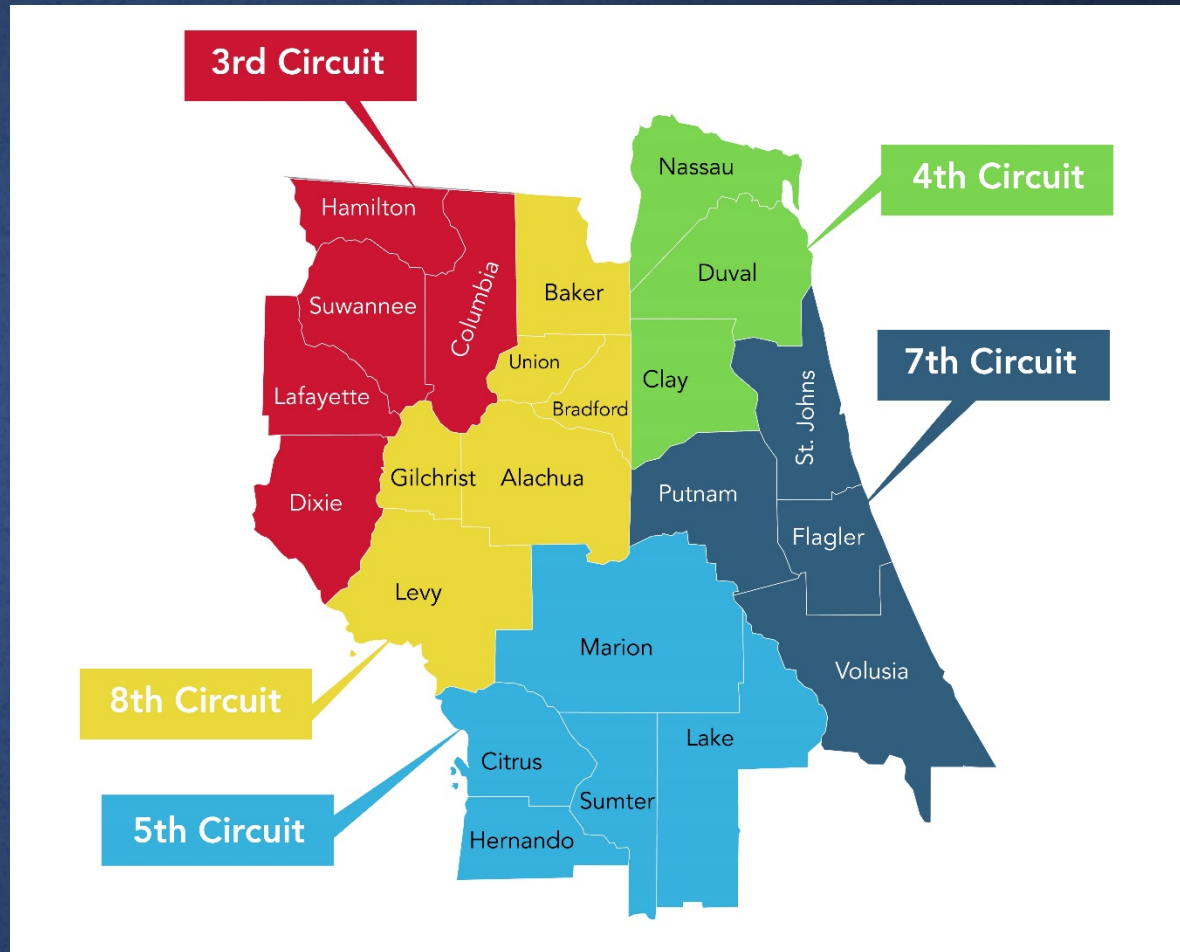
Methodology

- **Health system assessment** including insurance coverage (public and private), Medicaid eligibility, health care expenditures by payor source, hospital utilization data, physician supply rate and health professional shortage areas
- **Community input** including surveys of consumers, providers and stakeholders as well as focus groups in each Circuit. The data collected through these processes as well as LSFHS service utilization data were analyzed for trends and community priorities



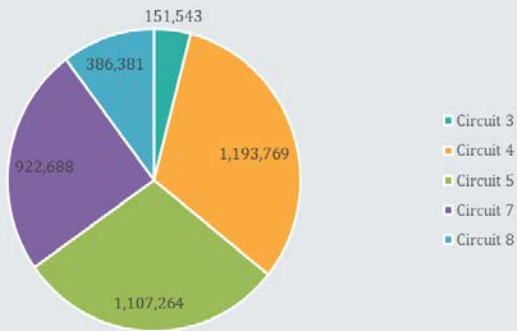
HEALTH
SYSTEMS

LSF Service Area

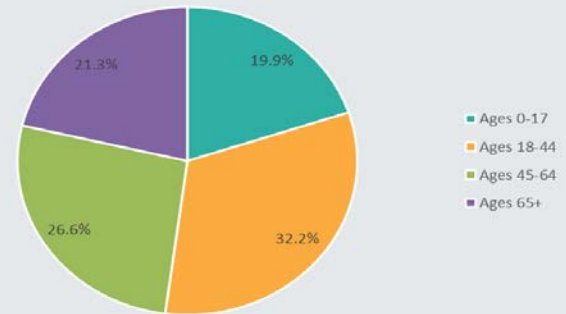


Service Area Population

- Total Population
2013-2017**



- Population by Age Group
2013-2017**



Community Input



Consumer Survey- Mental Health Services

Attributes	Number (Percent) n = 110					
	Always	Most Times	Sometimes	Rarely	Never	Does Not Apply
When I need an appointment, I can schedule one soon enough to meet my needs	45 (40.9)	29 (26.4)	19 (17.3)	5 (4.5)	5 (4.5)	7 (6.4)
Provider hours are convenient for me	53 (48.2)	28 (25.5)	19 (17.3)	2 (1.8)	2 (1.8)	6 (5.5)
I have transportation to the provider	61 (55.5)	18 (16.4)	13 (11.8)	5 (4.5)	2 (1.8)	11 (10.0)
Staff at provider office respect my privacy	78 (70.9)	16 (14.5)	6 (5.5)	2 (1.8)	2 (1.8)	6 (5.5)
Staff at provider office are available to help me when I have questions	66 (60.0)	22 (20.0)	12 (10.9)	3 (2.7)	1 (0.9)	6 (5.5)
Staff at provider office are nice to me	74 (67.3)	18 (16.4)	8 (7.3)	3 (2.7)	1 (0.9)	6 (5.5)
Amount of time provider spends with me is acceptable	63 (57.3)	26 (23.6)	11 (10.0)	3 (2.7)	1 (0.9)	6 (5.5)
I am satisfied with the care received	65 (59.0)	19 (17.3)	13 (11.8)	5 (4.5)	2 (1.8)	6 (5.5)
My provider coordinates my care with other healthcare providers	51 (46.4)	19 (17.3)	12 (10.9)	9 (8.2)	5 (4.5)	14 (12.7)
My personal needs are considered by provider	65 (59.0)	21 (19.0)	11 (10.0)	4 (3.6)	3 (2.7)	6 (5.5)
I make decisions about my care	64 (58.2)	23 (20.9)	11 (10.0)	4 (3.6)	1 (0.9)	7 (6.4)
I am getting better	60 (54.5)	27 (24.5)	10 (9.0)	4 (3.6)	1 (0.9)	8 (7.3)

Consumer Survey-Substance Abuse Services

Attributes	Number (Percent) n = 131					
	Always	Most Times	Sometimes	Rarely	Never	Does Not Apply
When I need an appointment, I can schedule one soon enough to meet my needs	62 (47.3)	28 (21.4)	19 (14.5)	6 (4.60)	3 (2.3)	13 (10.0)
Provider hours are convenient for me	67 (51.1)	34 (26.0)	11 (8.4)	5 (3.8)	4 (3.0)	10 (7.6)
I have transportation to the provider	74 (56.5)	21 (16.0)	10 (7.6)	7 (5.3)	3 (2.3)	16 (12.2)
Staff at provider office respect my privacy	84 (64.1)	23 (17.6)	11 (8.4)	4 (3.0)	1 (0.7)	8 (6.1)
Staff at provider office are available to help me when I have questions	78 (59.5)	23 (17.6)	14 (10.7)	6 (4.6)	2 (1.5)	8 (6.1)
Staff at provider office are nice to me	81 (61.8)	24 (18.3)	14 (10.7)	2 (1.5)	2 (1.5)	8 (6.1)
Amount of time provider spends with me is acceptable	71 (54.2)	32 (24.4)	13 (10.0)	3 (2.3)	3 (2.3)	9 (6.9)
I am satisfied with the care received	73 (55.7)	35 (26.7)	9 (6.9)	4 (3.1)	2 (1.5)	8 (6.1)
My provider coordinates my care with other healthcare providers	65 (49.6)	29 (22.1)	16 (12.2)	3 (2.3)	4 (3.1)	14 (10.7)
My personal needs are considered by provider	69 (52.7)	28 (21.4)	18 (13.7)	4 (3.1)	2 (1.5)	10 (7.6)
I make decisions about my care	74 (67.3)	23 (20.9)	18 (13.7)	4 (3.1)	3 (2.3)	9 (6.9)
I am getting better	78 (70.9)	32 (24.4)	10 (7.6)	1 (0.7)	3 (2.3)	7 (5.3)

Consumer Survey – Barriers to Treatment

Barriers	Number (Percent) (Top responses in shaded boxes)			
	Survey Respondents n = 155		Adults/Children under Survey Respondent Guardianship or Care n = 22	
	Type of Services			
	Mental Health	Substance Use	Mental Health	Substance Use
Cost	37 (23.9)	42 (27.0)	6 (27.3)	1 (4.5)
No insurance or insurance does not cover service	45 (29.0)	37 (23.9)	4 (18.0)	0
Transportation	36 (23.2)	43 (27.7)	6 (27.3)	0
Location of service	16 (10.3)	20 (12.9)	7 (31.8)	0
Childcare not available	6 (3.9)	9 (5.8)	0	0
Was in jail	19 (12.3)	25 (16.1)	1 (4.5)	0
Not aware service was available	15 (9.7)	24 (15.5)	2 (9.0)	1 (4.5)
Service was not available when it was needed	14 (9.0)	18 (11.6)	2 (9.0)	1 (4.5)
Could not get a referral	8 (5.2)	11 (7.0)	3 (13.6)	0
Stigma	19 (12.3)	25 (16.1)	3 (13.6)	0
I (he/she) refused services offered	7 (4.5)	11	3 (13.6)	1 (4.5)
Work-related problem (no paid time off, etc.)	4 (2.6)	7 (4.5)	1 (4.5)	0
Others included: homelessness, on waiting list, did not want help	24 (15.5)	3 (1.9)	0	0

Provider Survey – Services that need to be Increased or Expanded to Meet Community Need

Services	Number (Percent)
Individual Counseling – Mental Health	147 (44.1)
Psychiatry	122 (36.6)
Individual Counseling – Substance Abuse	108 (32.4)
Case Management	90 (27.0)
Inpatient Treatment (overnight)	80 (24.0)
Support Groups	61 (18.3)
Group Counseling – Mental Health	59 (17.7)
Group Counseling – Substance Abuse	59 (17.7)
Family Therapy	52 (15.6)
Primary Care	49 (14.7)
Drop-In Center	37 (11.1)
Other: Housing 10 (3.0), Detox beds 6 (1.8), Residential treatment services 5 (1.5), Services for Adolescents 5 (1.5), Clubhouse Services 2 (0.6), Prevention Services 2 (0.6)	30 (9.0)

Provider Survey – Top Barriers Providers Face in Trying to Meet Consumers Needs

Barriers	Number (Percent)
Funding	240 (72.0)
Adequate staffing	137 (41.1)
Client's lack of housing	109 (32.7)
Client's lack of payment source or funding	93 (27.9)
Ensuring client access to services	87 (26.1)
Staff burnout	83 (24.9)
Rate of reimbursement	39 (11.7)
Staff attrition	27 (8.1)
Client's lack of access to medications	27 (8.1)
Policies	26 (7.8)
Regulations	18 (5.4)
Workforce development	14 (4.2)
Infrastructure	13 (3.9)
Education level of providers	9 (2.7)
Client's arrest	4 (1.2)
Other: Pay scale/competitive pay for staff 5 (1.5), Transportation 4 (1.2), Parental involvement 4 (1.2), Lack of prevention 2 (0.6)	15 (4.5)



HEALTH
SYSTEMS

Provider Survey – Top Barriers Consumers Face in Accessing Services

Barriers	Number (Percent)
Transportation to services	166 (49.8)
Insurance issues (e.g., no insurance coverage, high deductibles)	145 (43.5)
Motivation or desire to receive services	132 (39.6)
Availability of services when needed	118 (35.4)
Cost	114 (34.2)
Stigma	81 (24.3)
Lack of awareness of service availability	55 (16.5)
Location of services	41 (12.3)
Work-related issues (e.g., no paid leave, denied leave time)	32 (9.6)
Lack of referral from other providers (e.g., primary care physician)	19 (5.7)
Refused services by provider	15 (4.5)
Incarceration	14 (5.2)
Childcare issues	12 (3.6)
Other: Homelessness 1 (0.3), sense of entitlement 1 (0.3)	2 (0.6)

Stakeholder Survey – Top Barriers to Meeting Residents Needs for Mental Health Services

Barriers	Number (Percent) Top responses in shaded boxes
Demand (e.g., growing need for services, can't keep up with need)	99 (53.2)
Funding	123 (66.1)
Insurance issues (e.g., lack of insurance companies that serve this area, new or no providers that accept insurance plan, adequate coverage, high deductibles and co-pays)	89 (47.8)
Lack of mental health care professionals	83 (44.6)
Need of community collaboration and/or community partners	50 (26.9)
Not a priority	20 (10.8)
Political constraints, issues and/or will	14 (7.5)
Stigma	67 (36.0)
Transportation	7 (3.8)
Other: Patience non-compliance, medication costs, culturally competent care, no options beyond parole 1 each (.55 each)	4 (2.2)

Stakeholder Survey – Top Barriers to Meeting Residents Needs for Substance Abuse Services

Barriers	Number (Percent) Top responses in shaded box
Demand (e.g., growing need for services, can't keep up with need)	107 (57.5)
Funding	123 (66.1)
Insurance issues (e.g., lack of insurance companies that serve this area, new or no providers that accept insurance plan, adequate coverage, high deductibles and co-pays)	84 (45.2)
Lack of substance use treatment and prevention professionals	84 (45.2)
Need of community collaboration and/or community partners	54 (29.0)
Not a priority	25 (13.4)
Political constraints, issues and/or will	20 (10.8)
Stigma	53 (23.5)
Other: Transportation 4 (2.2), Rehab/aftercare 3 (1.6), Addressing root causes 1 (0.5), comorbidity of alcohol abuse 1 (0.5)	9 (4.8)

Provider Focus Groups

- Strengths:
 - Evidence-based Practices
 - No Wrong Door
 - ROSC
- Challenges:
 - Lack of adequate resources/funding
 - Lack of flexibility in funding
 - Difficulty recruiting and retaining staff
 - Data platforms



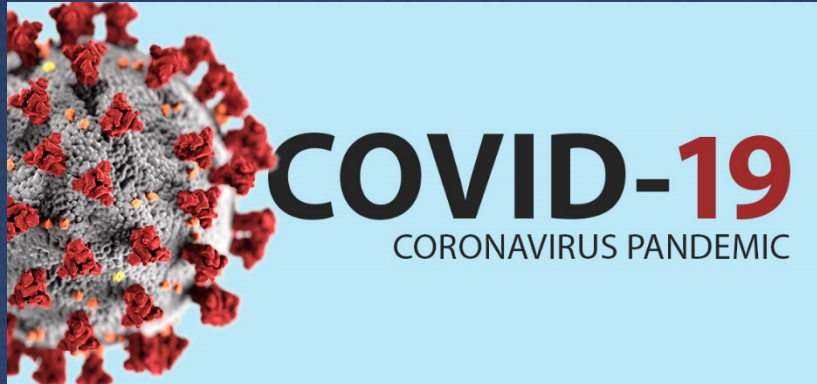
Top Five Needs, Emerging Issues and Strategic Initiatives



Top 5 Needs

- Short Term Residential Treatment Beds
- Substance Abuse Detox, Residential Treatment Beds and Outpatient SA treatment
- Care Coordination and Housing Vouchers to stabilize and support individuals in the community
- Co-Responder Teams to divert individuals from acute care and justice system
- Workforce Investment to recruit and retain qualified staff in key positions

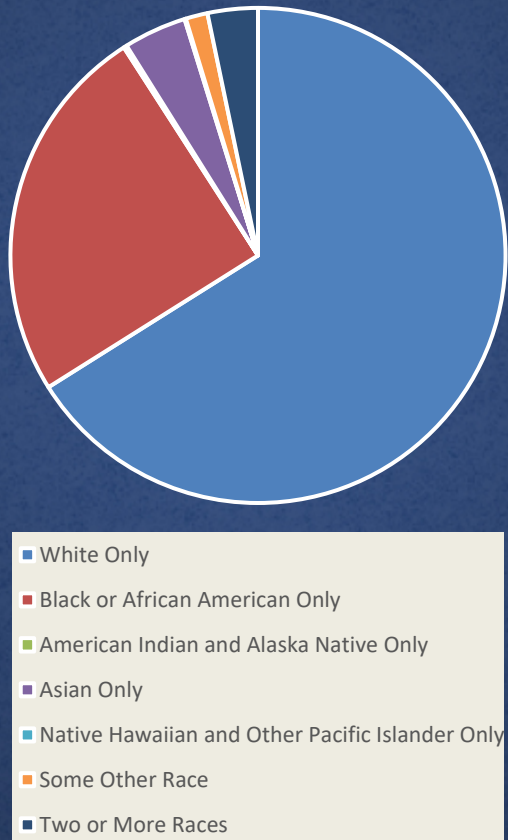
Emerging Issues



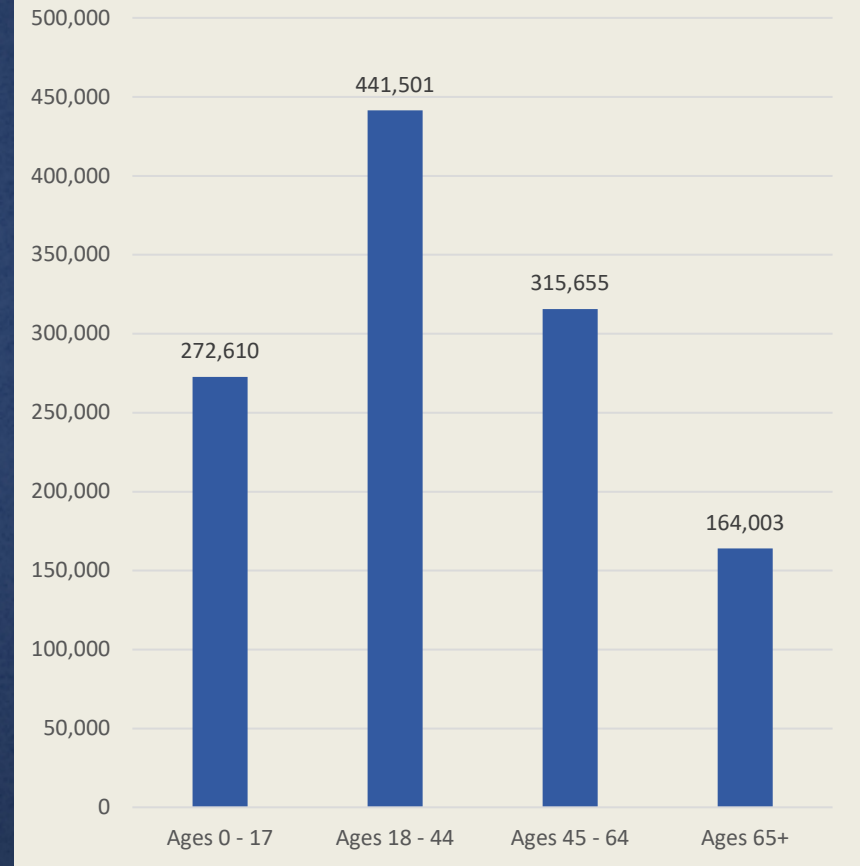


Circuit 4 Population

Circuit 4 Population by Race



Circuit 4 Population by Age





Circuit 4

Social Determinants of Health





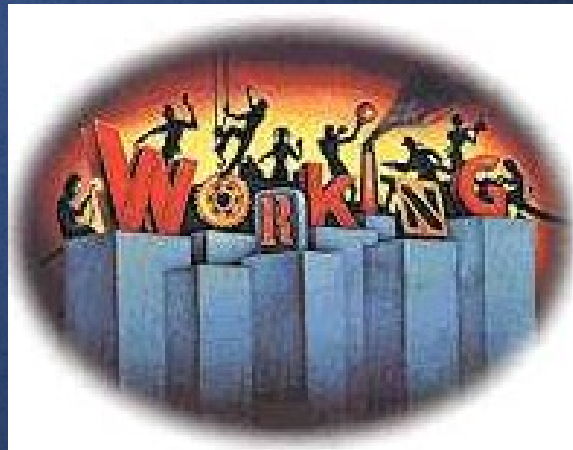
Circuit 4 Education

Area	Estimated Population 25 + Years of Age	All Genders		Males		Females	
		Estimated Number	Estimated Percent	Estimated Number	Estimated Percent	Estimated Number	Estimted Percent
No High School Diploma *							
Clay	137,354	12,179	8.9	6,191	4.5	5,988	4.4
Duval	617,788	65,766	10.6	33,239	5.4	32,527	5.3
Nassau	56,914	4,923	8.6	2,665	4.7	2,258	4.0
Circuit 4	812,056	82,868	10.2	42,095	5.2	40,773	5.0
Florida	14,396,066	1,787,348	12.4	912,378	6.3	874,970	6.1
High School Diploma **							
Clay	137,354	77,156	56.2	37,241	27.1	39,915	29.1
Duval	617,788	312,399	50.6	149,567	24.2	162,832	26.4
Nassau	56,914	31,473	55.3	15,061	26.5	16,412	28.8
Circuit 4	812,056	421,028	51.8	201,869	24.9	219,159	27.0
Florida	14,396,066	7,107,792	49.4	3,401,323	23.6	3,706,469	25.7
High School Diploma **							
Clay	137,354	77,156	56.2	37,241	27.1	39,915	29.1
Duval	617,788	312,399	50.6	149,567	24.2	162,832	26.4
Nassau	56,914	31,473	55.3	15,061	26.5	16,412	28.8
Circuit 4	812,056	421,028	51.8	201,869	24.9	219,159	27.0
Florida	14,396,066	7,107,792	49.4	3,401,323	23.6	3,706,469	25.7

* No diploma **HS diploma or equivalency, some college no degree *** College degree, AA or higher

Circuit 4 Unemployment

Area	Total Population 16+ years	Labor Force Participation		Unemployment Rate
		Estimated Number	Estimated Percent	Estimated Percent
Clay	160,699	101,722	63.3	8.1
Duval	726,124	477,063	65.7	7.4
Nassau	64,591	37,269	57.7	5.7
Circuit 4	951,414	616,055	64.8	7.4
Florida	16,645,386	9,770,842	58.7	7.4





HEALTH
SYSTEMS

Circuit 4 Poverty

	Estimated Total Population	< 100 Percent of Poverty		< 150 Percent of Poverty		< 200 Percent of Poverty		< 300 Percent of Poverty	
Area		Estimated Number	Estimated Percent	Estimated Number	Estimated Percent	Estimated Number	Estimated Percent	Estimated Number	Estimated Percent
Clay	201,472	20,998	10.4	38,813	19.3	54,103	26.9	93,093	46.2
Duval	891,138	143,014	16	227,865	25.6	318,053	35.7	479,574	53.8
Nassau	77,659	8,866	11.4	14,334	18.5	20,568	26.5	34,466	44.4
Circuit 4	1,170,269	172,878	14.8	281,012	24.0	392,724	33.6	607,133	51.9
Florida	19,858,469	3,070,972	15.5	5,162,521	26.0	7,225,020	36.4	10,827,573	54.5



[This Photo](#) by Unknown Author is licensed under [CC BY-NC-ND](#)

Circuit 4 Housing

Florida Point in Time Count of Homeless Individuals

County	2015	2016	2017	2018	2019
Duval	1,566	1,784	1,643	1,640	1,494
Clay	147	76	84	62	74
Nassau	140	99	142	92	86
Florida	35,964	33,502	32,109	29,717	28,590

Circuit 4 Housing

Households with Severe Housing Cost Burden

	Severe housing cost burden	
	# Households with Severe Cost Burden	% Severe Housing Cost Burden
County		
Florida	1,289,294	18
Clay	8,415	12
Duval	54,663	16
Nassau	3,446	12

Circuit 4

Access to Healthcare



Circuit 4 Insured Population

Insured and Uninsured Children ages 0-18

Area	Total Estimated Number	Insured		Uninsured	
		Total Estimated	Percent Estimated	Total Estimated	Percent Estimated
Clay	51,840	48,334	93	3,506	6.8
Duval	218,134	203,116	93	15,018	6.9
Nassau	16,818	15,450	92	1,368	8.1
Circuit 4	286,792	266,900	93	19,892	6.9
Florida	4,350,247	3,980,351	91	369,896	8.5

Insured and Uninsured Adults age 19++

Area	Total Estimated Number	Insured		Uninsured	
		Total Estimated	Percent Estimated	Total Estimated	Percent Estimated
Clay	148,420	130,006	87.6	18,414	12.4
Duval	674,746	575,134	85.2	99,612	14.8
Nassau	60,704	52,483	86.5	8,221	13.5
Circuit 4	883,870	757,623	85.7	126,247	14.3
Florida	15,617,684	13,004,635	83.3	2,613,049	16.7

Circuit 4 Healthcare Population to Provider Ratios

	Primary care physicians		Dentists		Mental health providers	
County	# Primary Care Physicians	PCP Ratio	# Dentists	Dentist Ratio	# Mental Health Providers	MHP Ratio
Clay	112	1,860:1	114	1,862:1	180	1,179:1
Duval	778	1,191:1	764	1,228:1	1,636	573:1
Nassau	37	2,179:1	25	3,309:1	89	929:1
Florida	14,865	1,387:1	12,314	1,704:1	31,466	667:1

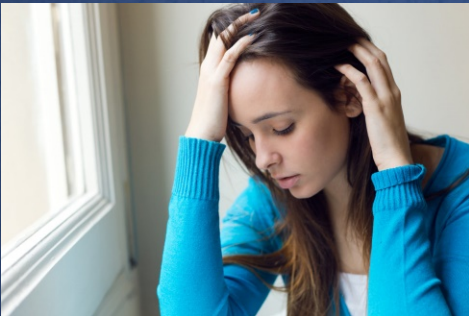


Circuit 4

Youth Behavioral Health Indicators



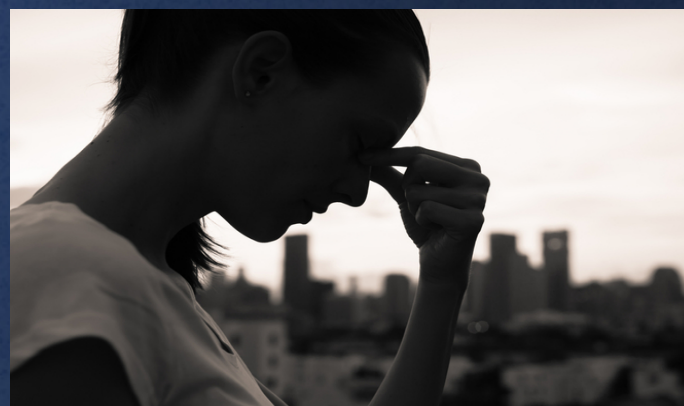
Students Reporting “Sometimes I think Life is Not Worth It”



	2018		
Area	Total In Survey	Percent	Estimated Number
Clay	1,394	30.3	422
Duval	1,132	31.2	353
Nassau	461	23.2	107
Circuit 4	2,987	29.5	883
Florida	54,611	28.2	15,400

Students Reporting “At Times I Think I Am No Good At All”

	2018		
Area	Total In Survey	Percent	Estimated Number
Clay	1,394	45.4	633
Duval	1,132	39.1	443
Nassau	461	33.2	153
Circuit 4	2,987	41.1	1,229
Florida	54,611	39.7	21,681



Students Reporting Feeling Depressed or Sad Most Days

	2018		
Area	Total In Survey	Percent	Estimated Number
Clay	1,394	40.2	560
Duval	1,132	44.7	506
Nassau	461	34.2	158
Circuit 4	2,987	41	1,224
Florida	54,611	42.6	23,264

Students Reporting Using Illicit Drugs or Alcohol in their Lifetime

	2014		2016		2018	
Area	Total In Survey	Percent	Total In Survey	Percent	Total In Survey	Percent
Clay	1,713	50.5	1,517	44.7	1,394	44.8
Duval	2,179	51.5	1,930	44.5	1,132	42.9
Nassau	1,003	50	738	47.6	461	20.6
Circuit 4	4,895	50.8	4,185	45.1	2,987	40.3
Florida	65,917	48.5	65,776	44.8	54,611	42.9



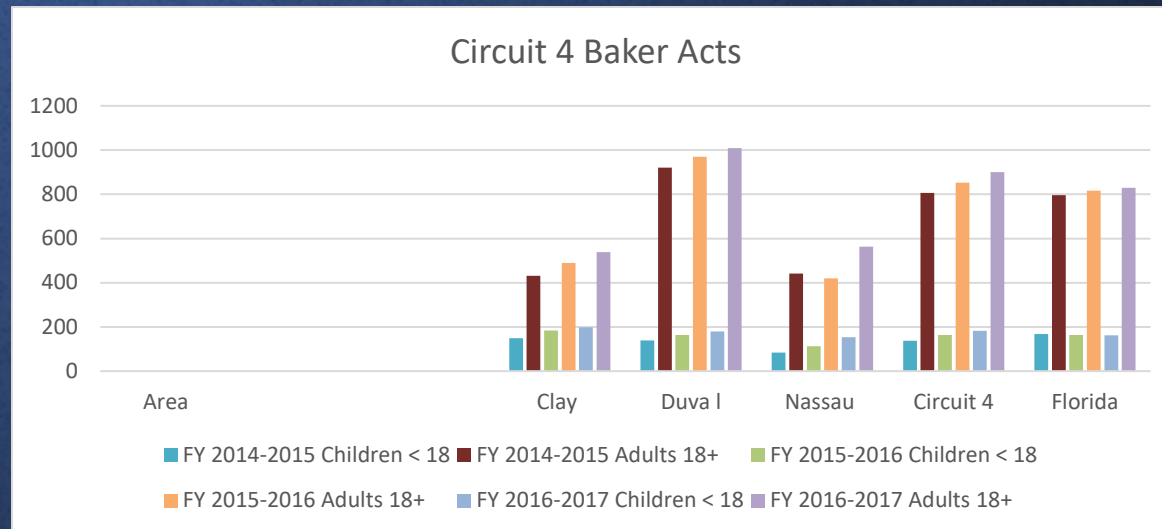


Students Reporting Using Illicit Drugs or Alcohol in Past 30 Days

	2014		2016		2018	
Area	Total In Survey	Percent	Total In Survey	Percent	Total In Survey	Percent
Clay	1,713	27.7	1,517	24.3	1,394	22.3
Duval	2,179	28.7	1,930	26.3	1,132	22.9
Nassau	1,003	27.1	738	24.7	461	20.6
Circuit 4	4,895	28	4,185	25.3	2,987	22.3
Florida	65,917	27	65,776	24.3	54,611	42.9

Circuit 4 Baker Acts

	FY 2014-2015		FY 2015-2016		FY 2016-2017	
Area	Children < 18	Adults 18+	Children < 18	Adults 18+	Children < 18	Adults 18+
	Rate Per 100,000 Total Population	Rate Per 100,000 Total Population	Rate Per 100,000 Total Population	Rate Per 100,000 Total Population	Rate Per 100,000 Total Population	Rate Per 100,000 Total Population
Clay	149.4	431.1	184.3	489.4	198.7	538.7
Duval	139.1	921.2	163	970.2	180.1	1,008.9
Nassau	83.6	442.1	112.4	419.4	152.8	562.7
Circuit 4	137.3	806.9	163.3	852.8	181.6	900.1
Florida	167.4	796.3	164	816.8	162.7	829.6



Percent of Adults Reporting Good Health

	Good Mental Health		
Area	2010	2013	2016
Clay	88	86	84.9
Duval	89.7	86.9	87.4
Nassau	88.8	90.9	85.6
Florida	88.2	87.3	88.6

	Good Physical Health		
Area	2010	2013	2016
Clay	86.9	86.6	86.9
Duval	86.3	86.7	86.6
Nassau	86.3	87.8	82.8
Florida	87.4	85.9	87.1



Average Number of Reported Unhealthy Days

Average Number of Unhealthy Mental Days in the Past 30 Days

Area	2010	2013	2016
Clay	3.7	4.2	4.2
Duval	3.6	4.2	4.1
Nassau	4.1	3.4	4.1
Florida	3.8	4.1	3.6

Average Number of Unhealthy Physical Days in the Past 30 Days

Area	2010	2013	2016
Clay	4.3	4.4	4.3
Duval	4.5	4.3	4.2
Nassau	4.2	3.6	5.4
Florida	4.1	4.5	4



Mental Health Related Deaths per 100,000 Population

	2015			2016			2017		
White									
Area	Crude Rate	Age- Adjusted		Crude Rate	Age- Adjusted		Crude Rate	Age- Adjusted	
	Number	Rate	Number	Rate	Number	Rate	Number	Rate	Number
Clay	107	64	61.5	94	55.3	52.1	114	66	60.6
Duval	313	55.6	45	356	62.3	50.3	395	68.3	55
Nassau	57	81.6	65.8	42	59.1	45.9	47	65	46.9
Circuit 4	477	59.6	49.7	492	60.5	50.2	556	67.5	55
Florida	6,754	43.6	23.7	6,555	41.7	22.4	6,922	43.4	23.1

	2015			2016			2017		
Black									
Area	Crude Rate	Age- Adjusted		Crude Rate	Age- Adjusted		Crude Rate	Age- Adjusted	
	Number	Rate	Number	Rate	Number	Rate	Number	Rate	Number
Clay	3	13.8	32.6	3	13.3	34.6	8	33.7	81.1
Duval	65	23.7	38.8	75	26.7	42.4	65	22.7	36
Nassau	1	21.1	23	4	83.6	61.7	1	20.6	14.2
Circuit 4	69	22.9	37.9	82	26.6	42.6	74	23.5	37.6
Florida	612	18.3	26.9	641	18.8	26.3	659	19	26.2

	2015			2016			2017		
Hispanic									
Area	Crude Rate	Age- Adjusted		Crude Rate	Age- Adjusted		Crude Rate	Age- Adjusted	
	Number	Rate	Number	Rate	Number	Rate	Number	Rate	Number
Clay	6	33.1	67.9	4	20.9	35.9	7	34.5	71.1
Duval	16	20.5	40.8	13	15.7	31.4	13	15	28.4
Nassau	0	0	0	2	66.2	112.5	1	29.9	45.6
Circuit 4	22	22.3	44.3	19	18.1	35.1	21	19	36.7
Florida	906	18.9	21.4	873	17.6	19.2	1,016	19.8	21



Suicide Deaths per 100,000 Population

Suicide Age-Adjusted Death Rate, Single Year Per 100,000, 2019		
County	Count	Rate
All Florida Counties	3,427	14.5
Clay	43	18.1
Duval	177	17.4
Nassau	17	20



Top 10 Substances that were Cause of Death for Children 0-17

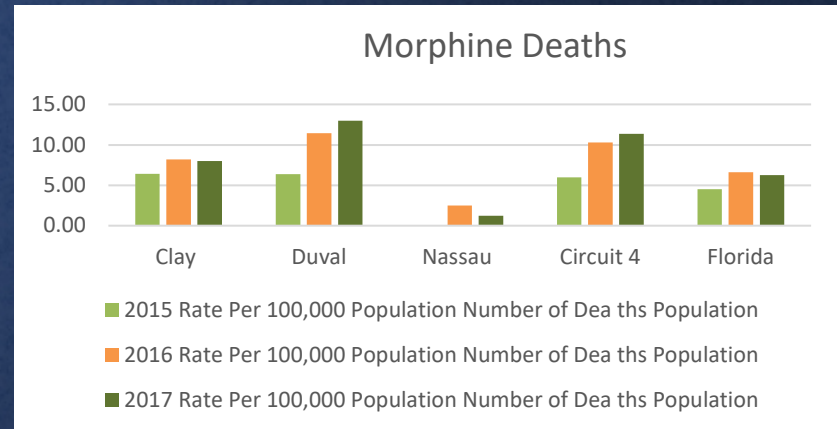
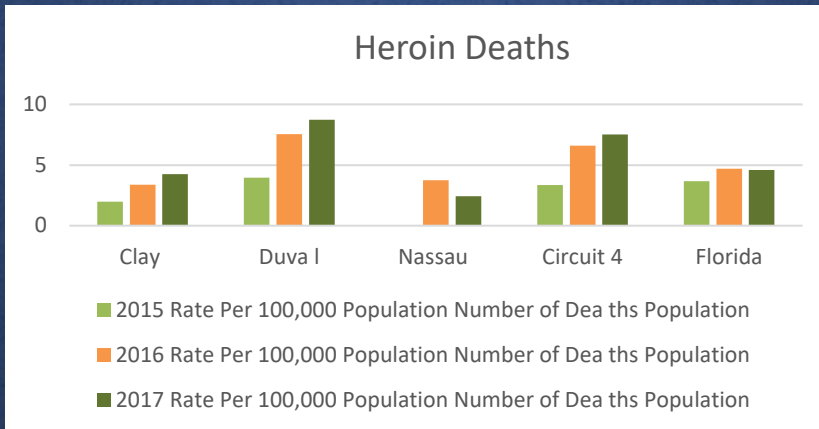
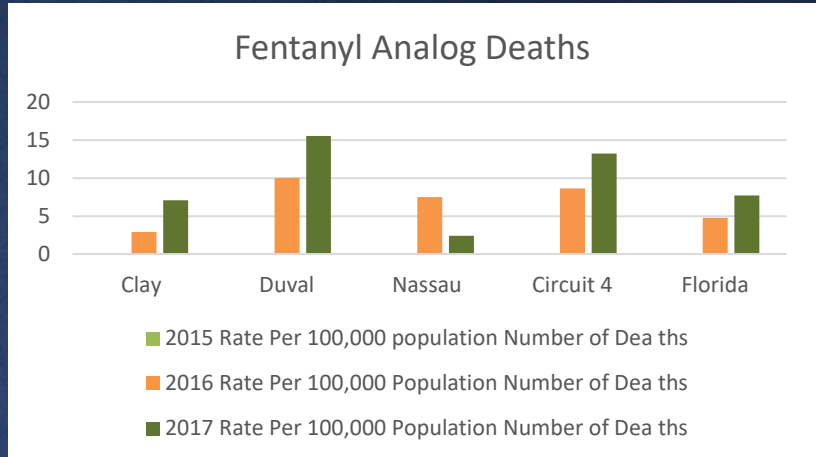
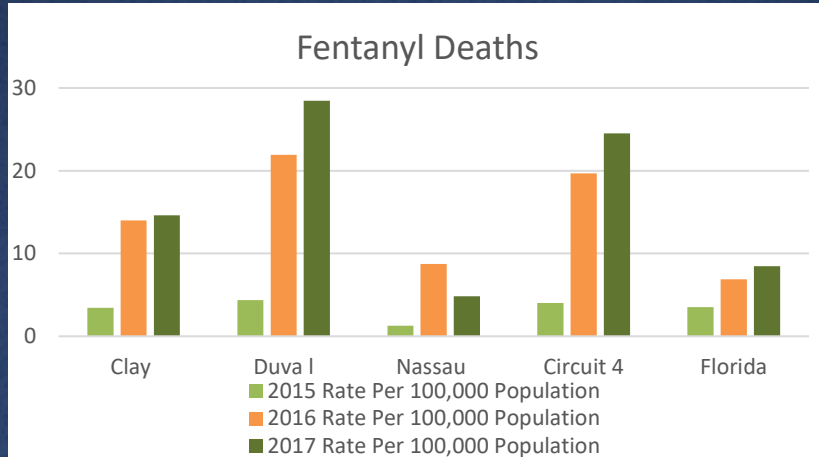
2017					
23-County Region			Florida		
Substance	Total Number	Percent of Total	Substance	Total Number	Percent of Total
Cocaine	3		30 Cocaine	9	18
Ethanol	1		10 Ethanol	5	10
Fentanyl	1		10 Fentanyl	5	10
Hydrocodone	1		10 Fentanyl Analogs	5	10
Methadone	1		10 Morphine	5	10
Methamphetamine	1		10 Heroin	4	8
Morphine	1		10 Alprazolam	3	6
Tramadol	1		10 Methamphetamine	3	6
Total	10		100 Oxycodone	3	6
			Halogenated inhalants	2	4
			Methadone	2	4
			Amphetamine	1	2
			Hydrocarbon Inhalants	1	2
			Hydrocodone	1	2
			Tramadol	1	2
			Total	50	100



Top 10 Substances that were Cause of Death for Adults 18+

2017					
23-County Region			Florida		
Substance (Rank)	Total Number	Percent of Total	Substance (Rank)	Total Number	Percent of Total
Fentanyl (1)	430	16.8	Cocaine (1)	2,003	16
Cocaine (2)	381	14.9	Fentanyl (2)	1,738	13.9
Fentanyl Analogs (3)	291	11.3	Fentanyl Analogs (3)	1,583	12.6
Morphine (4)	261	10.2	Morphine (4)	1,280	10.2
Ethanol (5)	180	7	Ethanol (5)	970	7.7
Heroin (6)	174	6.8	Heroin (6)	940	7.5
Oxycodone (7)	138	5.4	Alprazolam (7)	788	6.3
Alprazolam (8)	119	4.6	Oxycodone (8)	607	4.8
Methamphetamine (9)	117	4.6	Methamphetamine (9)	461	3.7
Methadone (10)	72	2.8	Amphetamine (10)	255	2
All Others	401	15.6	All Others	1,906	15.2
Total	2,564	100	Total	12,531	100

Substance Abuse Related Deaths per 100,000 Population



Q & A