



BEACON
POINT

HOPE • COMMUNITY • PURPOSE

Marion County Hospital District

Leased public hospital

Invest \$10M to \$13M

Overarching Goal

Focus Areas

- Mental Health & Substance Abuse
- Dental
- Diabetes
- Obesity
- Tobacco

Modalities

Chronic Disease
Prevention Projects

Capacity-Building
Capital Projects

Demonstration Grants



Dental Doorway







Beacon
Genesis: The
Journey

Fifth Grant Cycle

Uninspiring Outcomes

Go solve...



Blank Pallate

Key Differences



Continuum of Care



Integrated Services



Step-down
services

Cliff or Steps?



Reduction-in-Harm to Abstinence



How do you define **Success**?

Gap Analysis & Solution

Build Significant Capacity –
Outpatient Services

Uninsured, Homeless,
Working Poor

Integrated System – Mental,
Physical, Life Stabilization



Phase 3

Building #2
Sober Living
Step-Down from Inpatient & Detox

Building #3
Group Therapy
NA
AA
12-Step
Peer Activities

Building #4
Education
GED
Trades
Life Stabilization

Phase 1

Building #1
FreeDOM Clinic USA
Behavioral Health Treatment
Substance Use Treatment
Assessments
Cognitive Behavioral Therapy
Talk Therapy
Group Therapy
Intern Program
Counseling
Records/Storage/Data

**Peer Support
Therapeutic
Garden**

Building #5
Medication Assisted Treatment
Pharmacy
Labs
Primary Care
Dental
Eye Care
DOH HIV & Hep A Testing

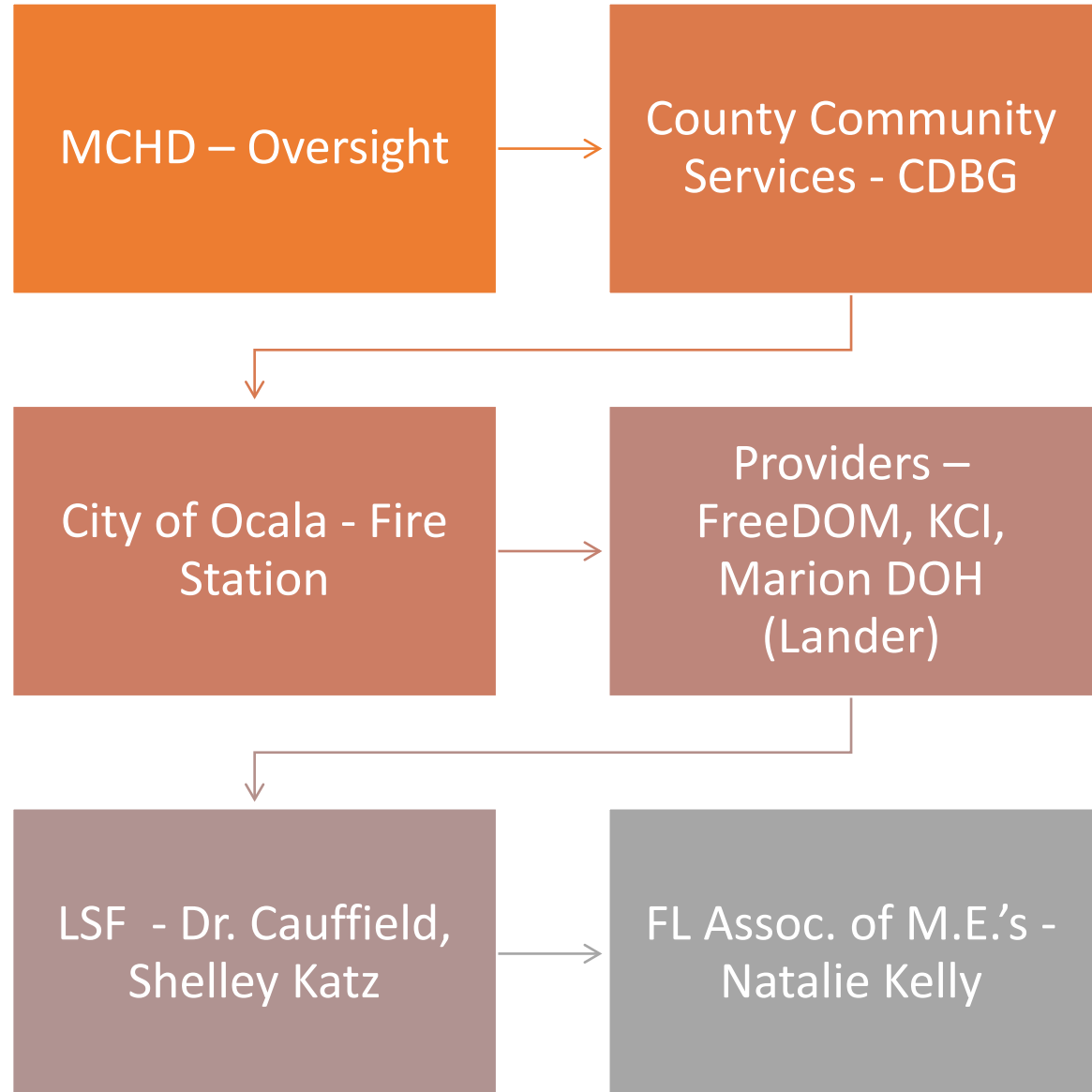
**Outdoor
Fitness
Therapy**

Phase 2

Building #6
Case Management
Life Stabilization Development
Self-Sufficiency Planning
SSI, Medicaid, VA, Disability
Benefits Center



Key Partners





BEACON
POINT

CEB BUILDING SOLUTIONS